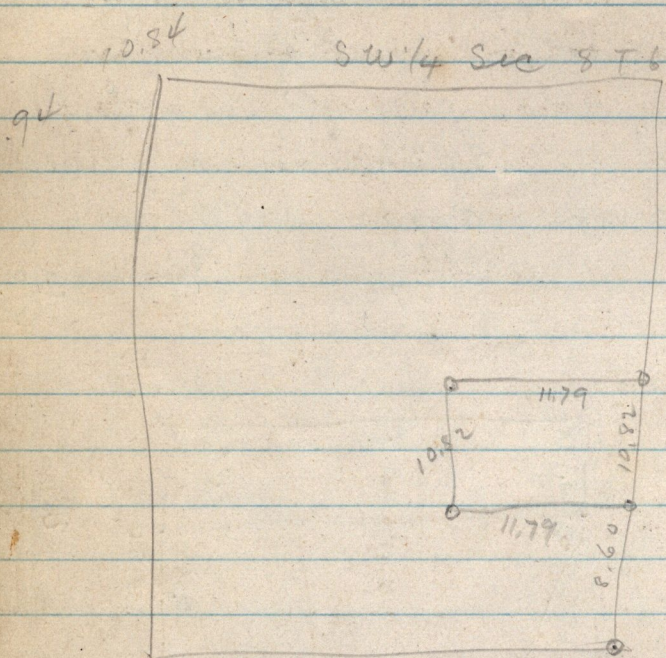


24.27-  
 12.85  
 37.12  
 42.98

1.80-00  
 71-40  
 108-20

71-40  
 99-20  
 171-80  
 9  
 0

S.W. 1/4 Sec 8 T. 6 N. R. 1 W.



Copy of deed from Peter Rosen and Rasmus Christoffersen to Eric Andersen - Part of S.W. 1/4 Sec 16 T. 6 N. R. 1 W.  
 Beg. 18.00 chains north from S.E. cor. said 1/4 Sec. thence North 17.00 ch West 20.25 ch. to 9<sup>th</sup> district Canal. thence along said Canal in a S.E. course to a point 9.25 ch West from beg. thence E. 9.25 ch to beg. contains 24 acres more or less  
 March 25-1887-

81.00  
 85  
 10.